

A woman with her hair pulled back is sitting in a large, modern armchair with a red and white houndstooth pattern. She is wearing a black, long-sleeved, low-cut dress and grey high-heeled sandals. The background is a solid dark red wall. The floor is a light-colored, textured surface. The brand name 'mirasol.' is overlaid in large white lowercase letters, and 'FROCA' is written in smaller red uppercase letters below it.

mirasol.

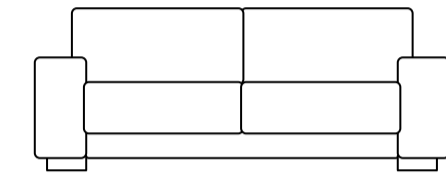
FROCA





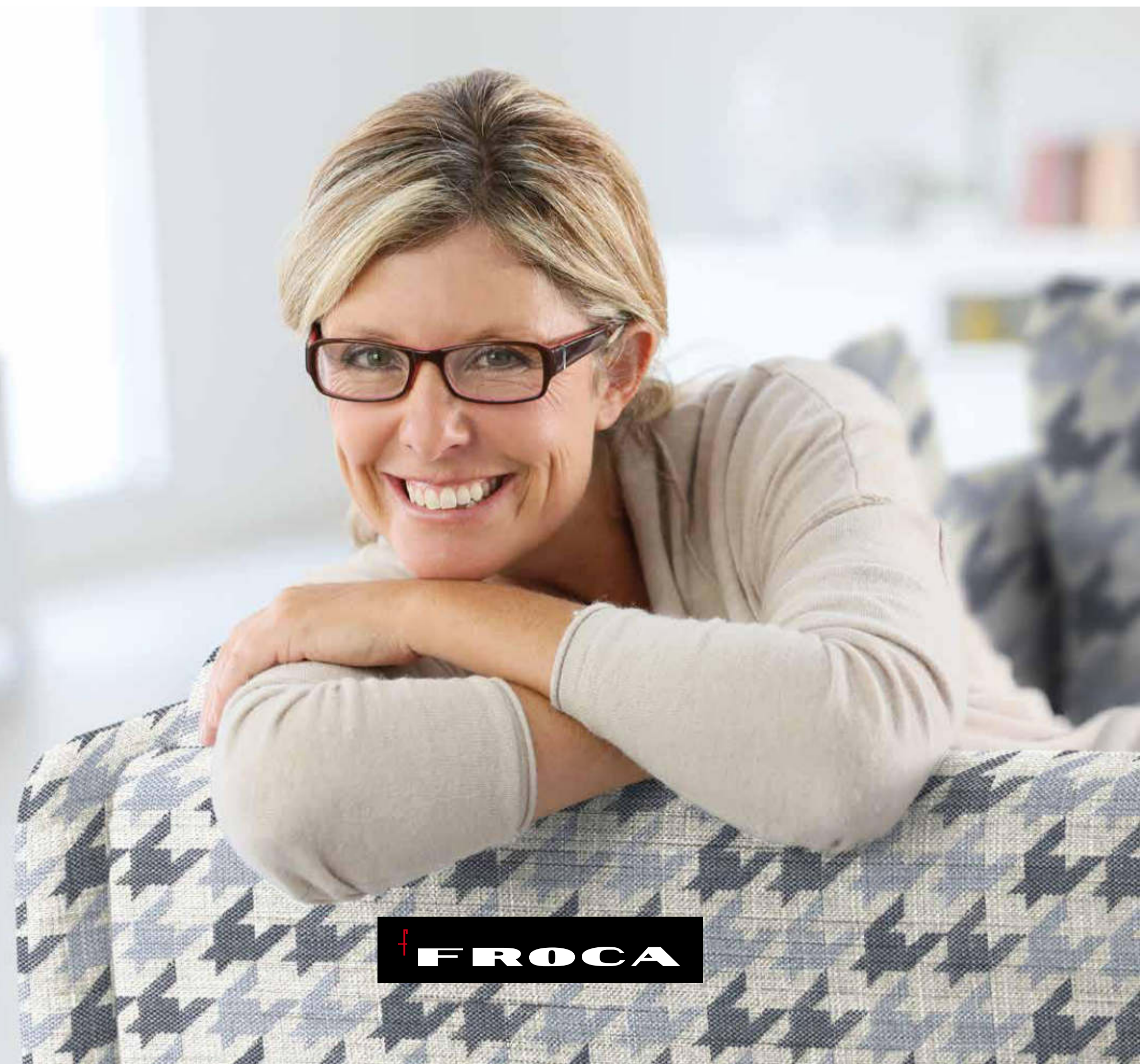
# mirasol.

beautiful fabrics



**Creating upholstery and decoration fabric since 1967.**

Creando tejidos de tapicería y decoración desde 1967.



[www.froca.com](http://www.froca.com)

**FROCA**





VINAROS 14



HABANA 02



HABANA 07



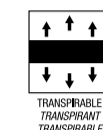
MIRASOL 14



OLOT 14



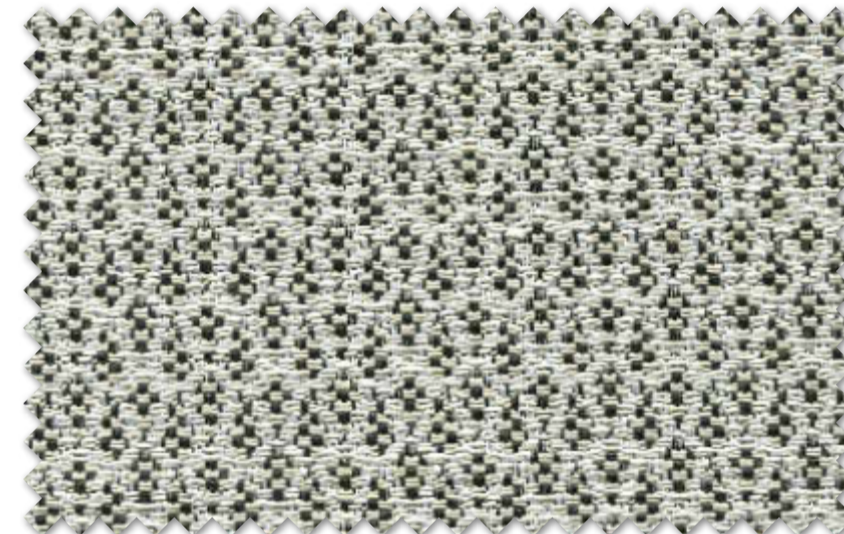
TORRENT 14



*My favourite colour ever!*



BESORA 14



FONTETA 14



*I love this beige colour.*

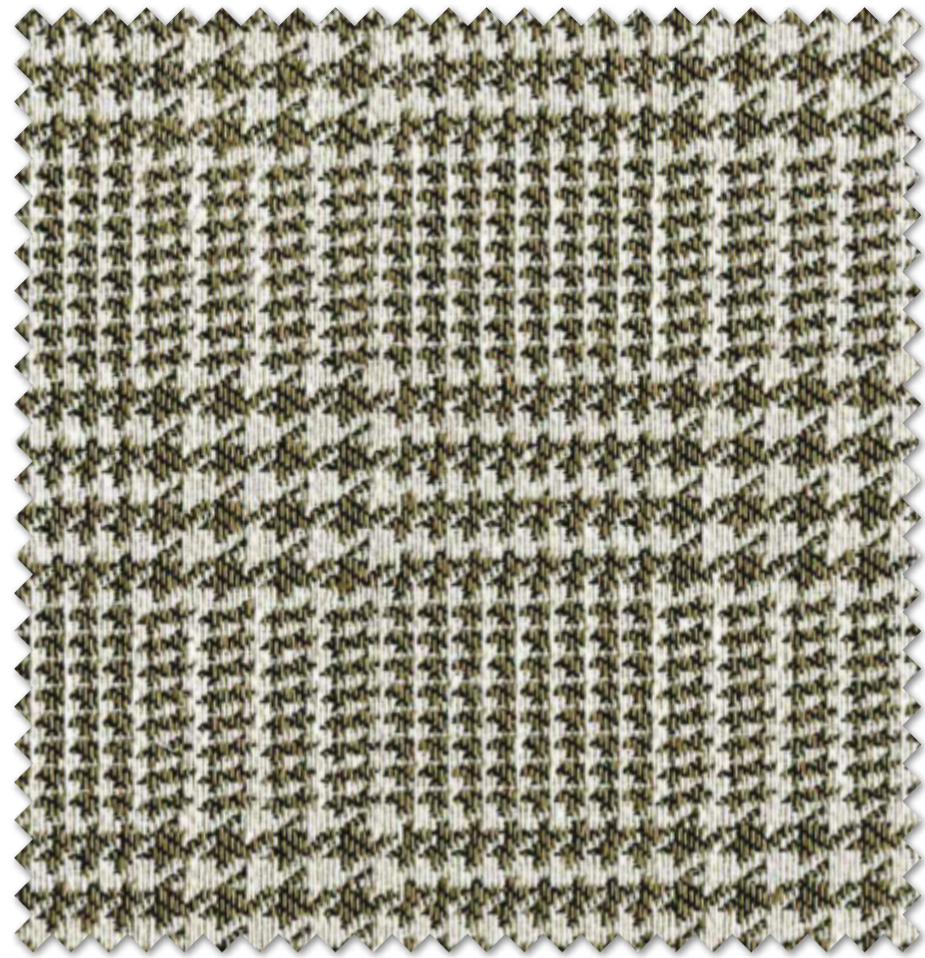


TORTOSA 14

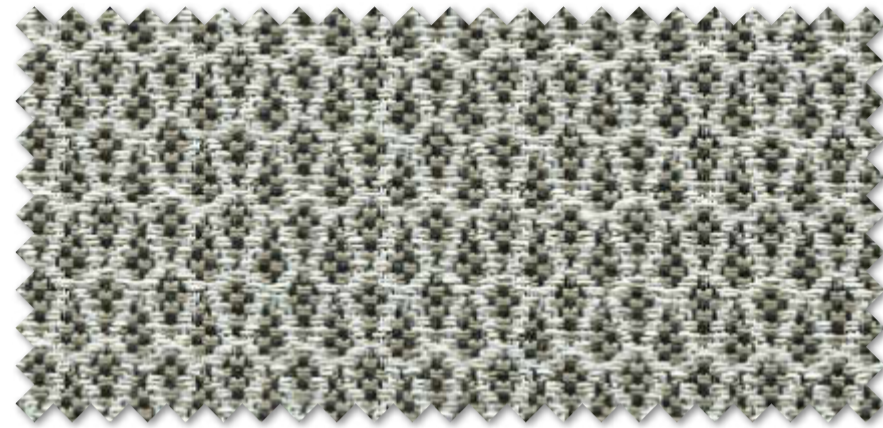
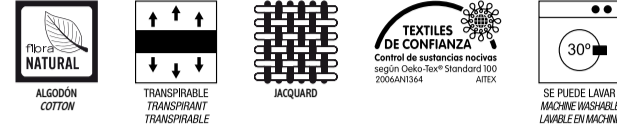


BLANES 14

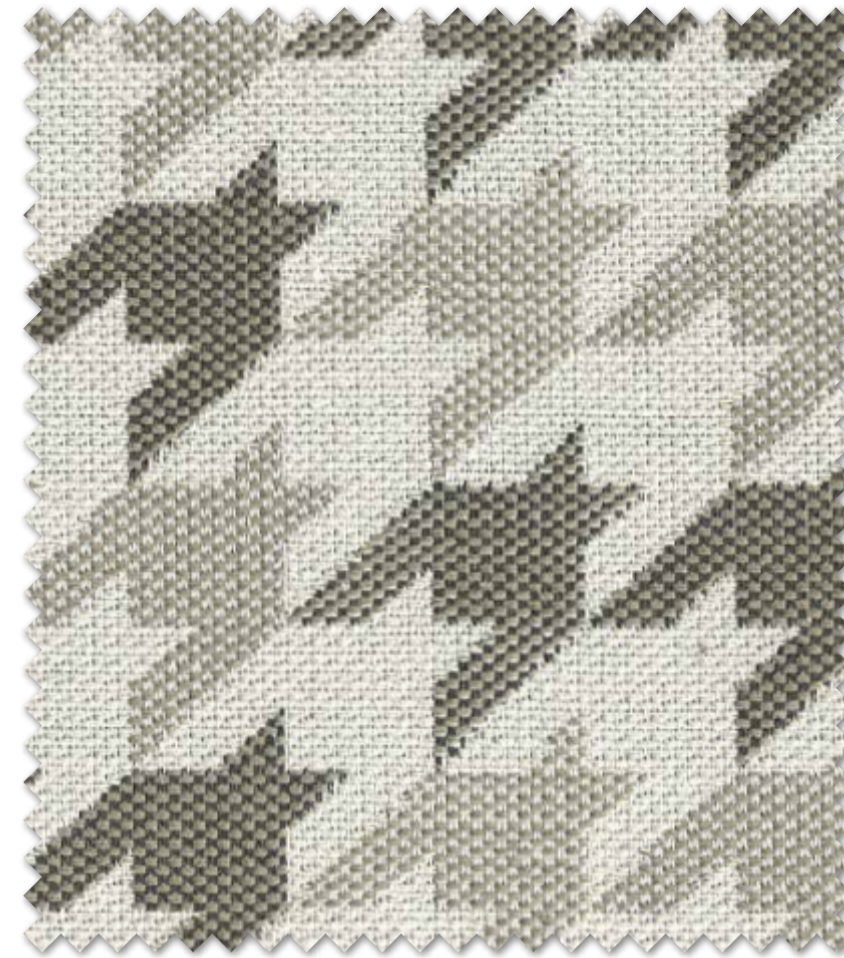




OLOT 01



FONTETA 01



MIRASOL 01

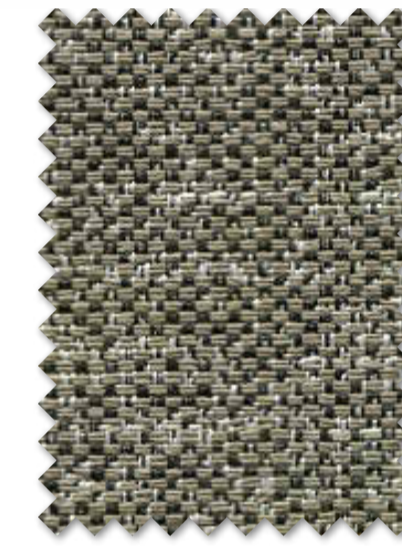
*I love this design.*



BLANES 01



BESORA 01



TORRENT 01



VINAROS 15



TORTOSA 01



HABANA 11



HABANA 13



Bright and modern,  
here comes the sun...



TORTOSA 03



HABANA 28



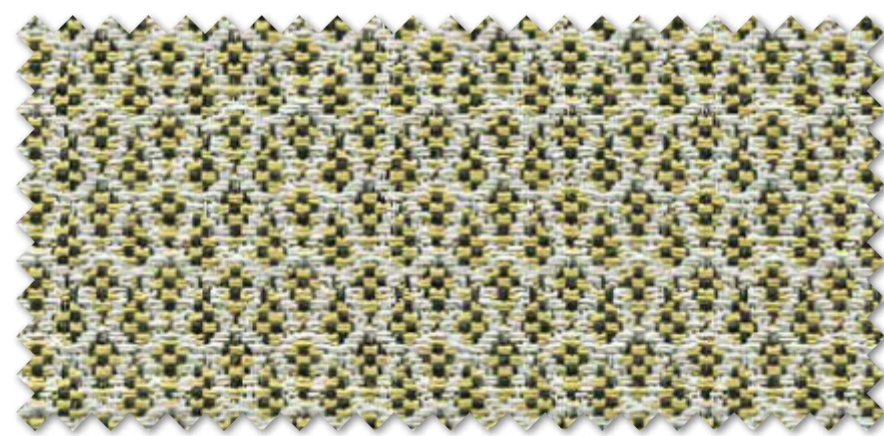
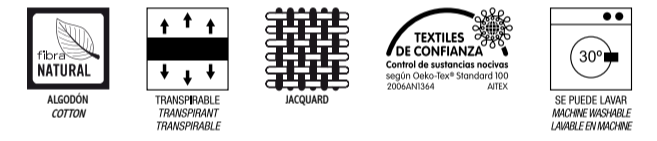
HABANA 27



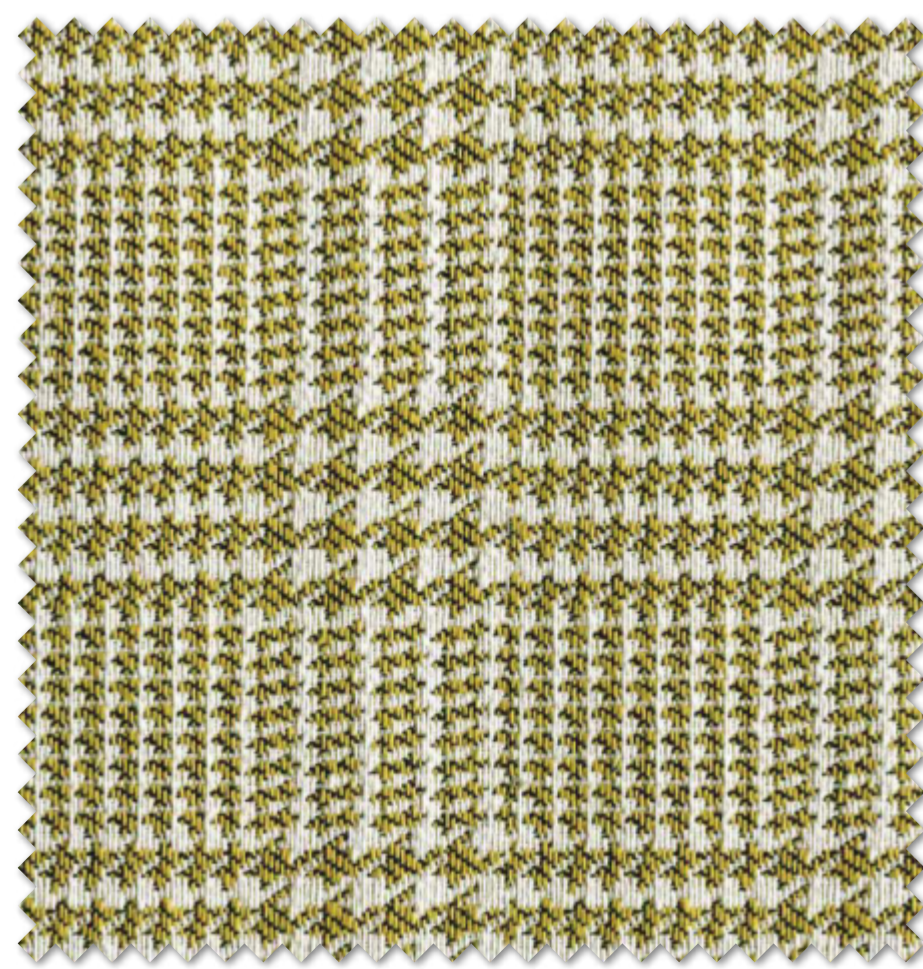
BLANES 03



BESORA 03



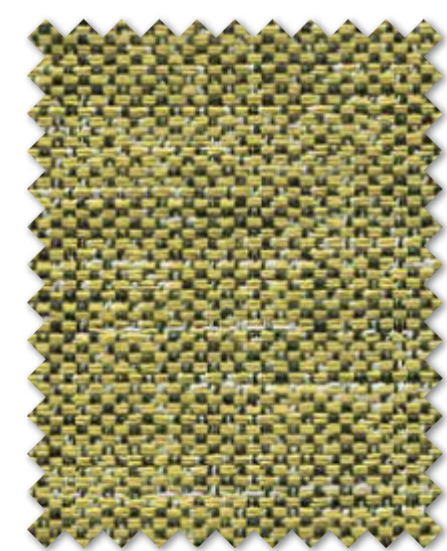
FONTETA 03



OLOT 03



MIRASOL 03



TORRENT 03

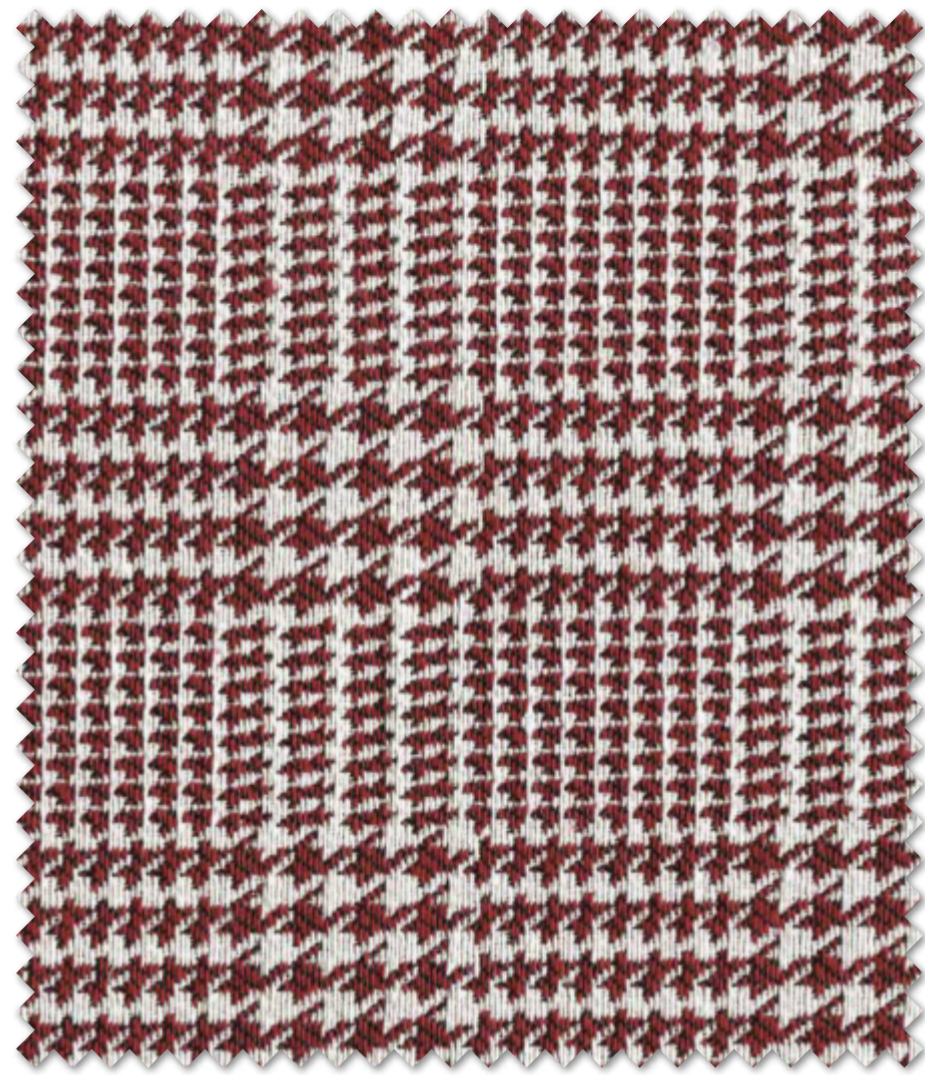


VINAROS 03

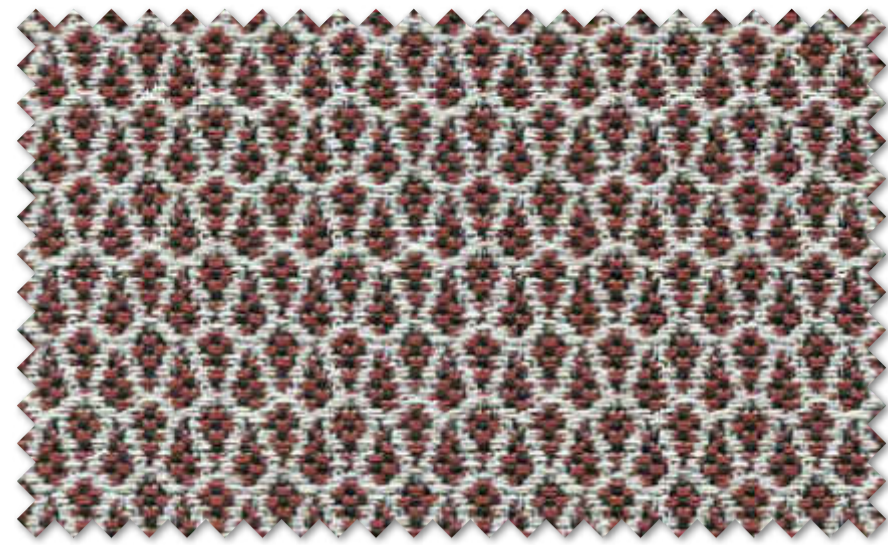


VINAROS 15





OLOT 04



FONTETA 04



HABANA 15



HABANA 20



MIRASOL 04



My favourite chair.



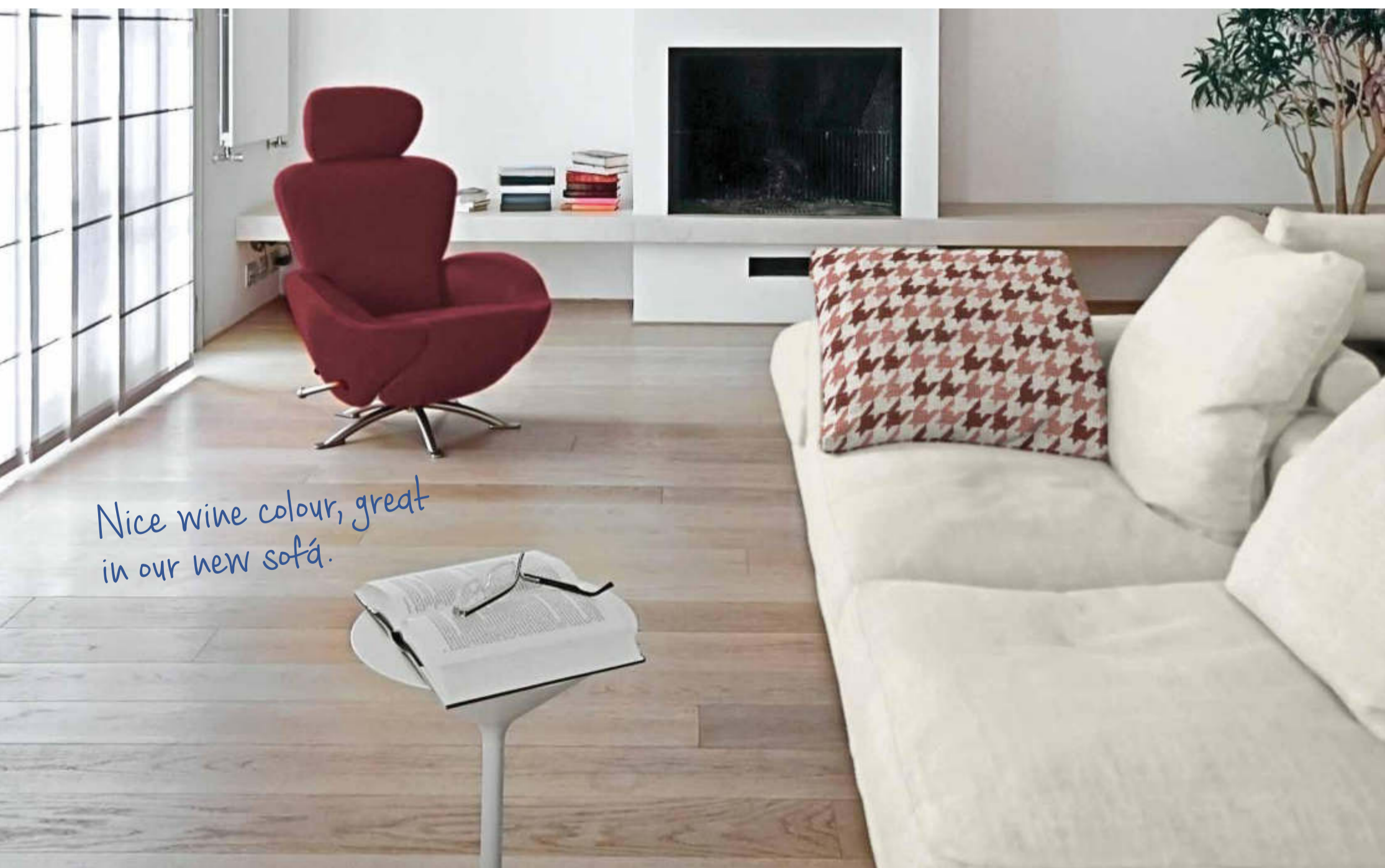
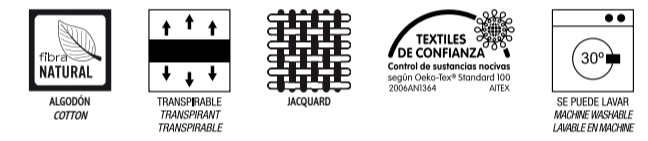
BLANES 04



VINAROS 15



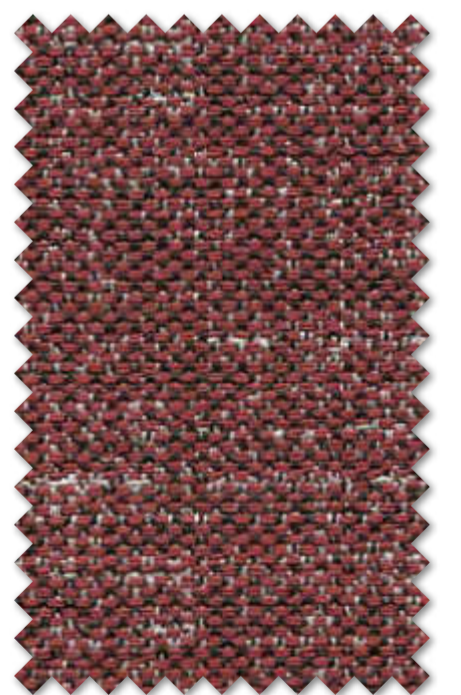
BESORA 04



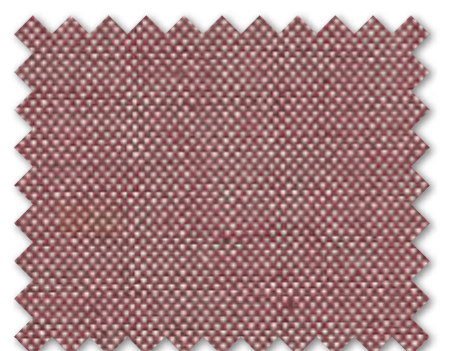
Nice wine colour, great in our new sofà.



TORTOSA 04



TORRENT 04



VINAROS 04







TORTOSA 05



BLANES 05



Life in pink!



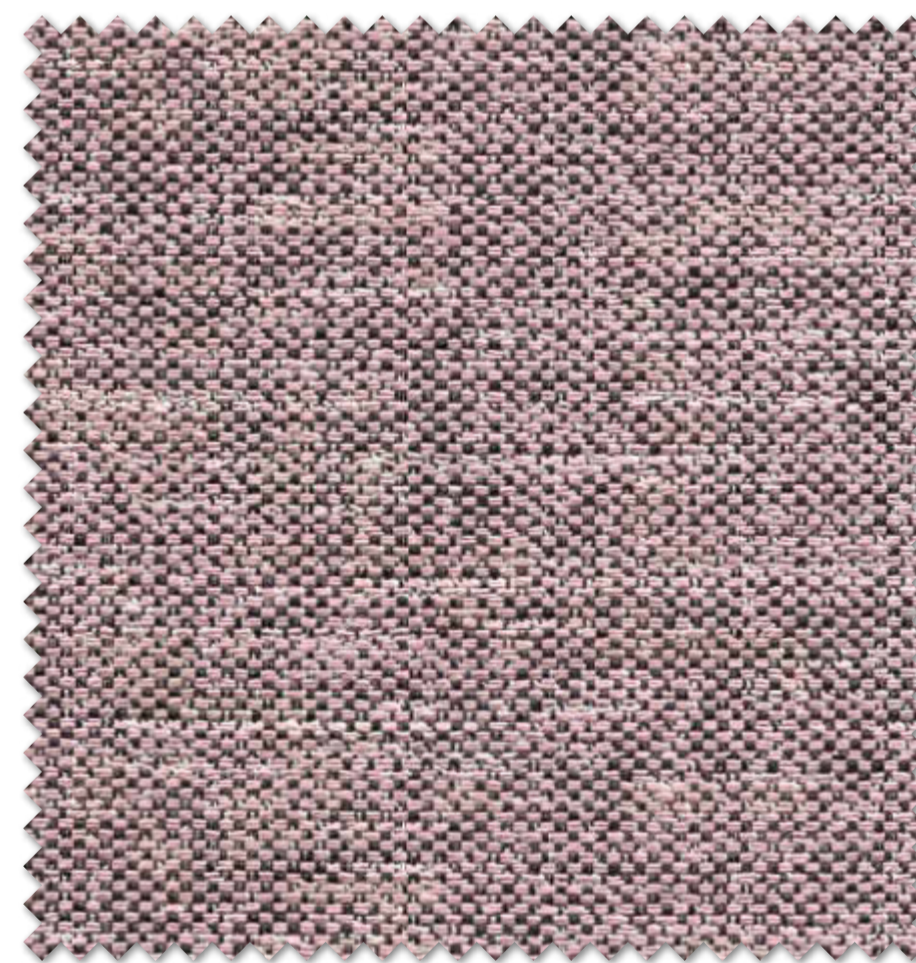
HABANA 5



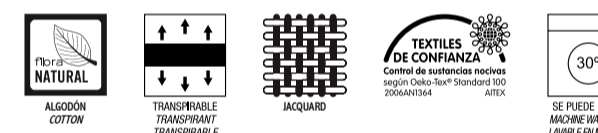
HABANA 12



MIRASOL 05



TORRENT 05



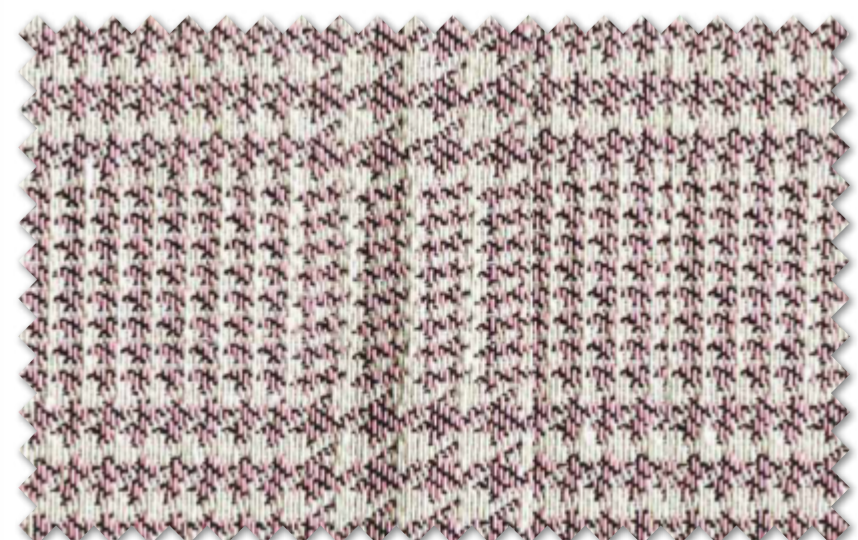
VINAROS 15



VINAROS 05



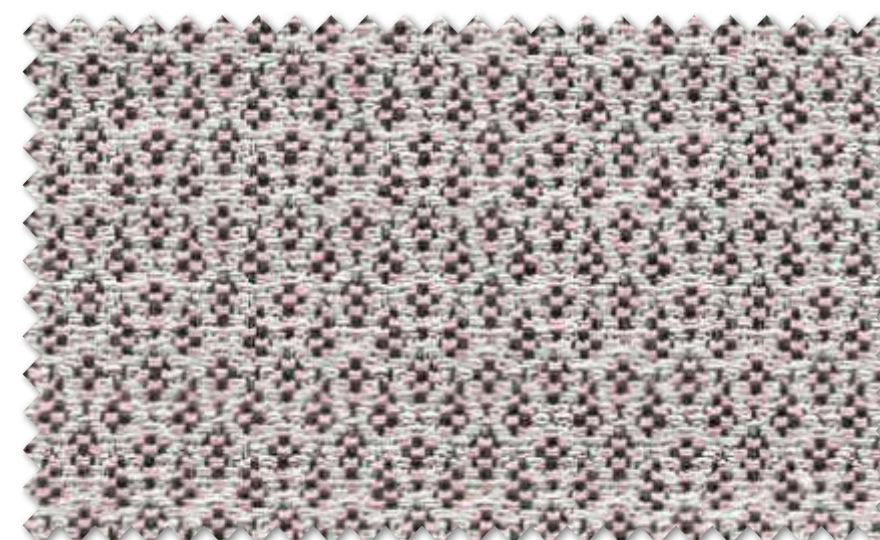
Warm and cozy, perfect for my reading sofa.



OLOT 05



BESORA 05



FONTETA 05





TORTOSA 07



BLANES 07



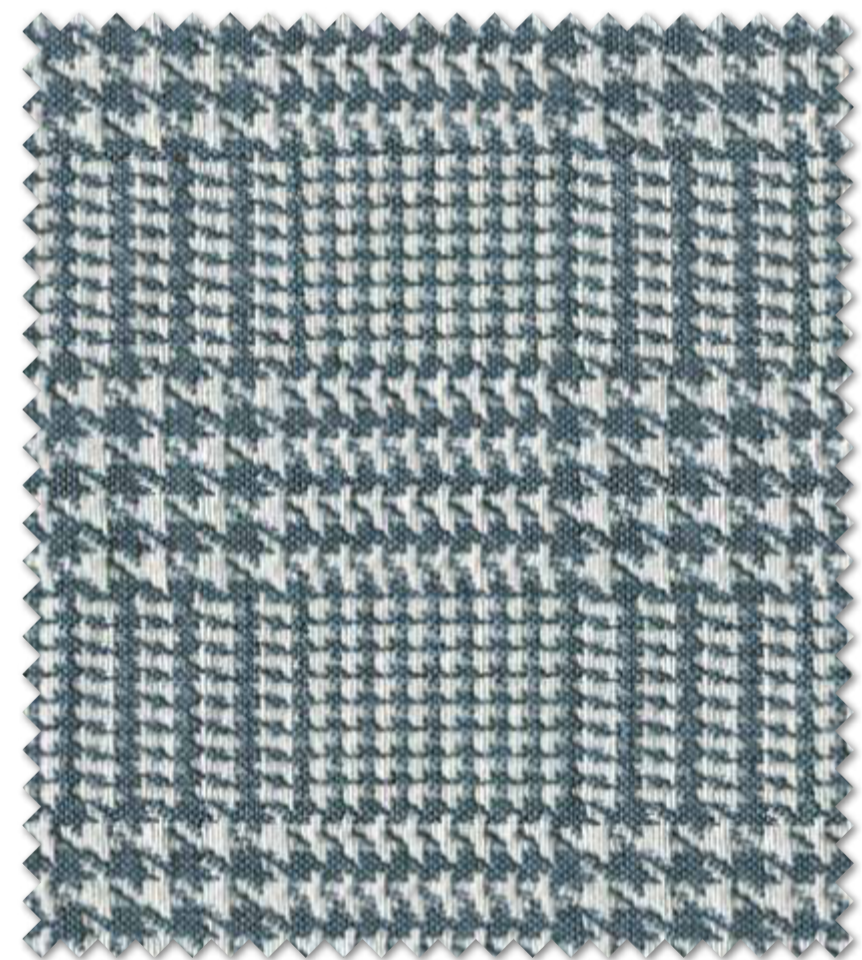
Very nice and peaceful corner.



VINAROS 07



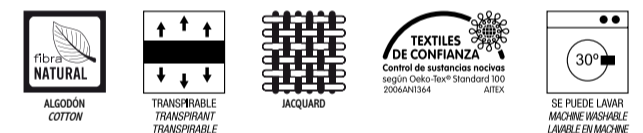
HABANA 23



OLOT 07



MIRASOL 07



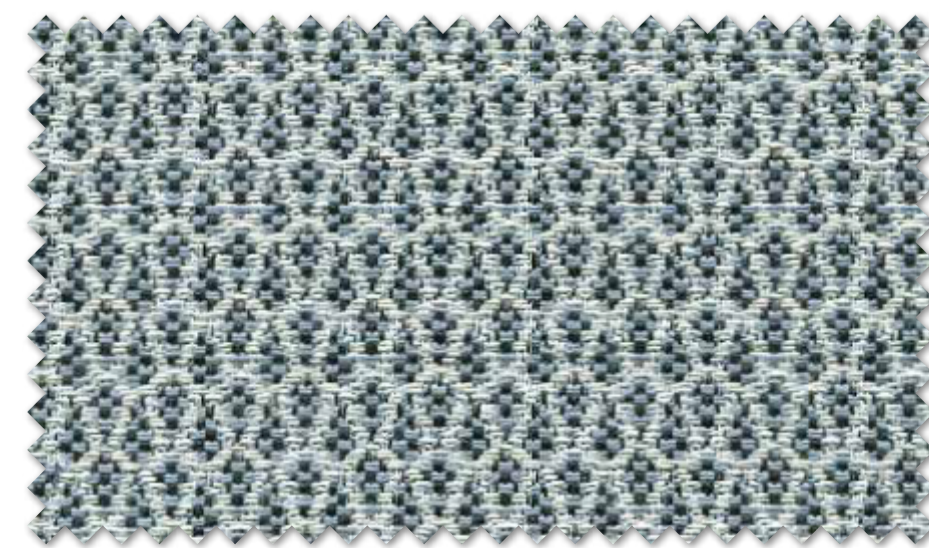
HABANA 24



¡A beautiful tone of blue!



BESORA 07



FONTETA 07



HABANA 5



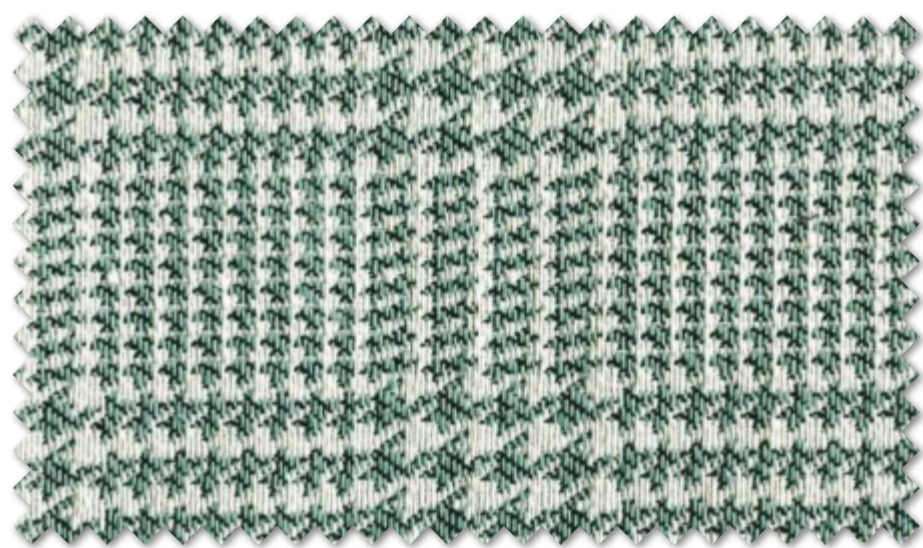
TORRENT 16





Give a touch of coolness with this genial sage green shade.

**FROCA**



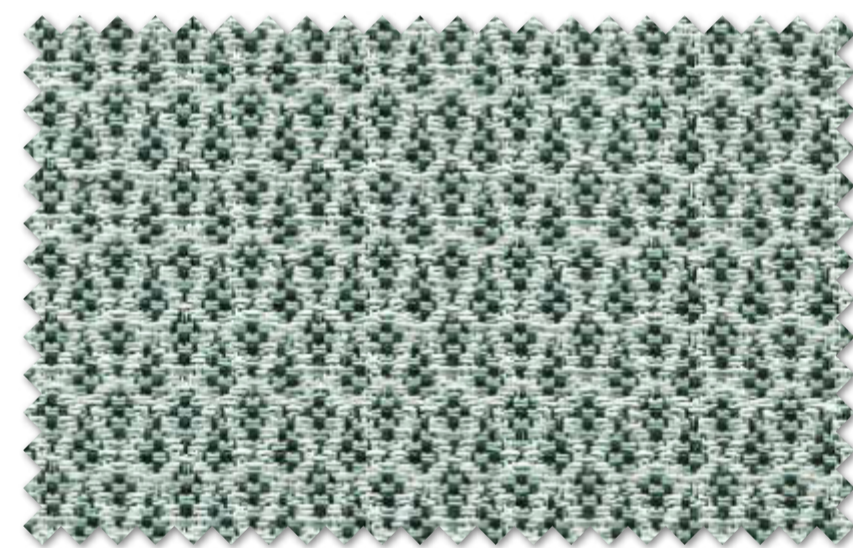
OLOT 09



TORTOSA 09



BLANES 09



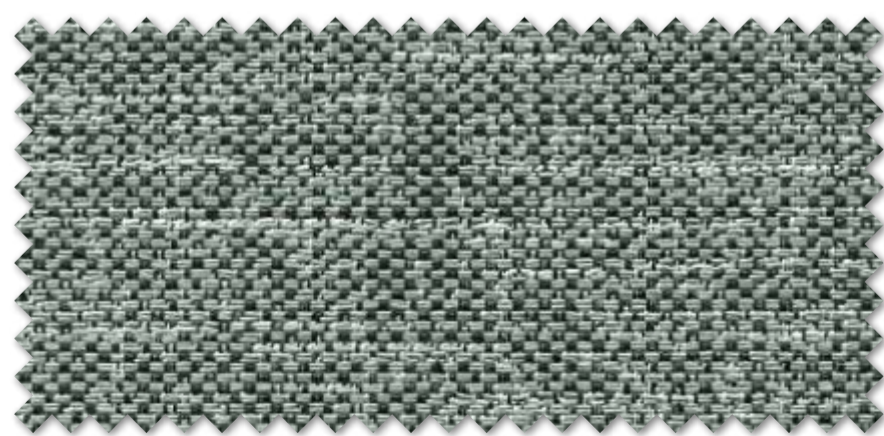
FONTETA 09



VINAROS 15



VINAROS 09



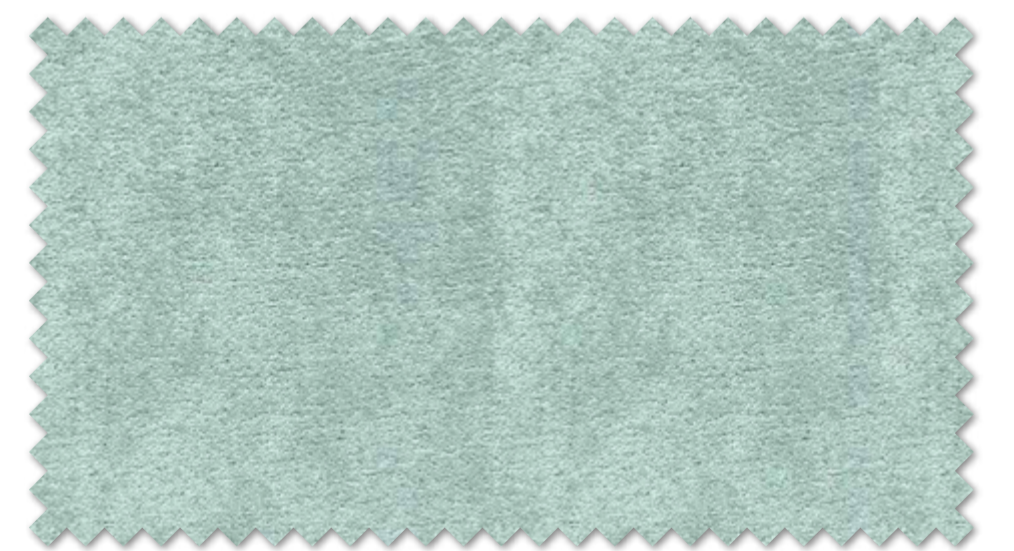
TORRENT 09



MIRASOL 09



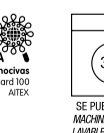
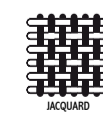
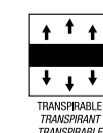
BESORA 09



HABANA 25



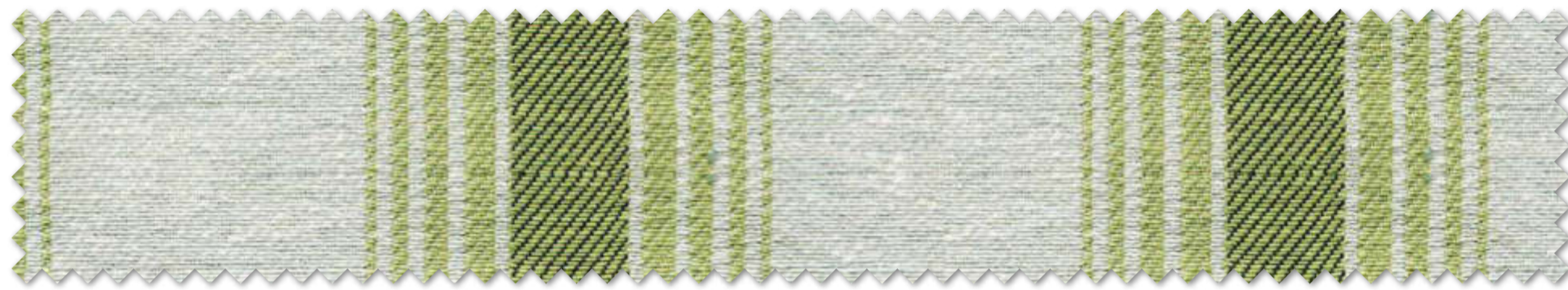
HABANA 05







TORTOSA 10



BLANES 10



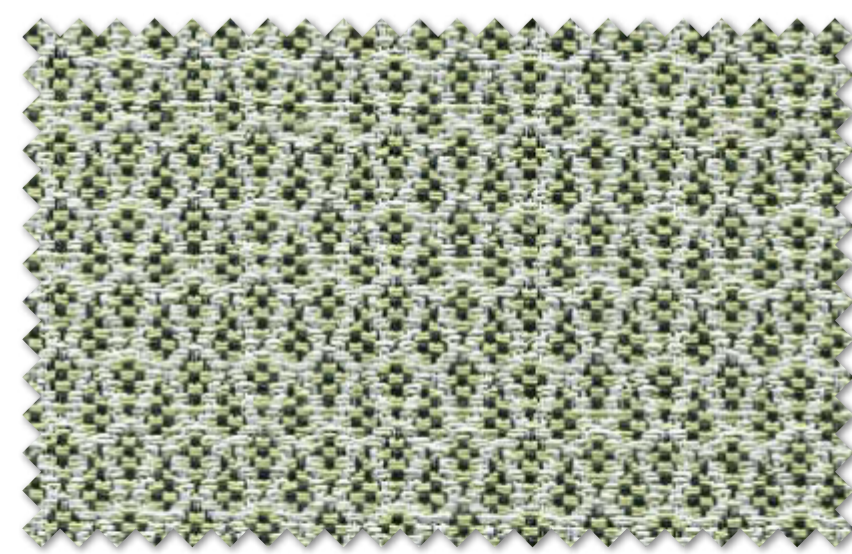
HABANA 05



OLOT 10



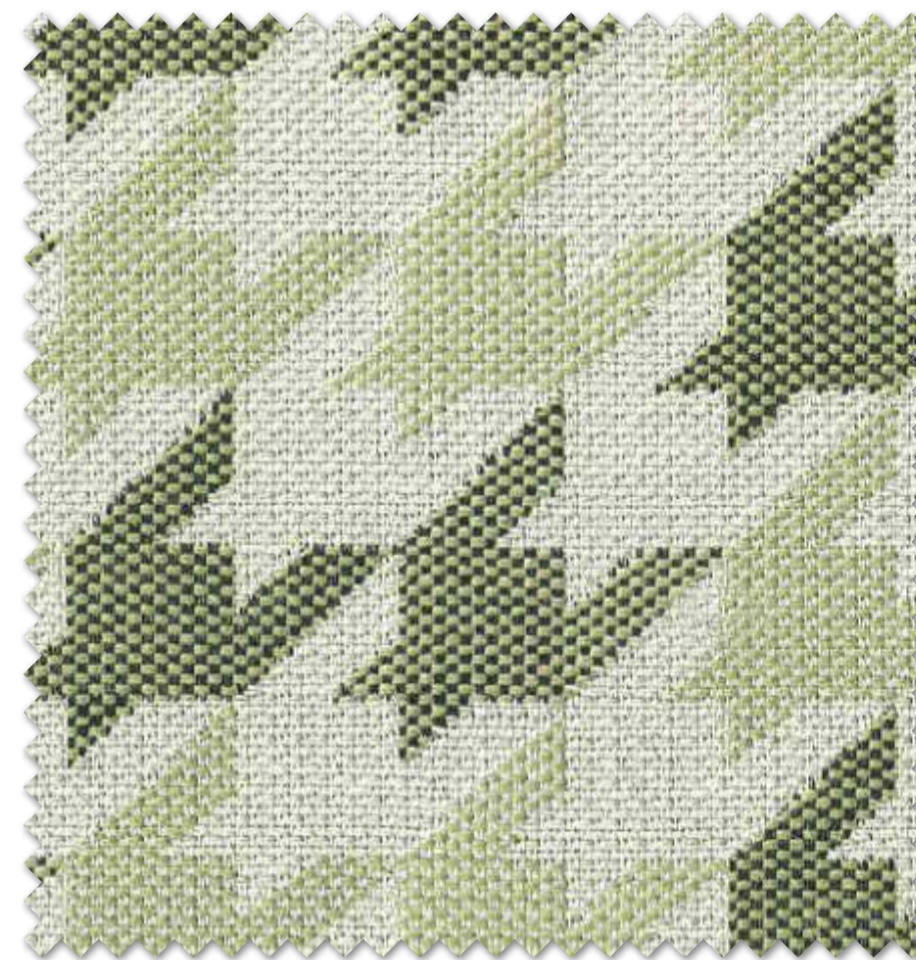
HABANA 28



FONTETA 10



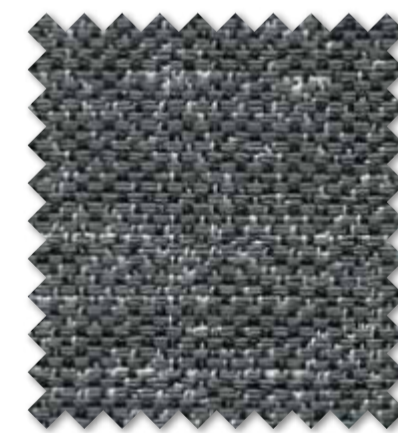
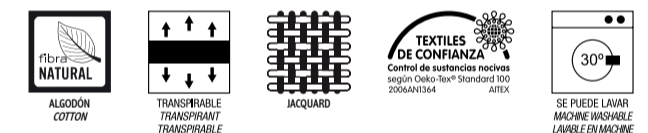
Lime colour goes perfectly with grey, doesn't it?



MIRASOL 10



BESORA 10



TORRENT 12

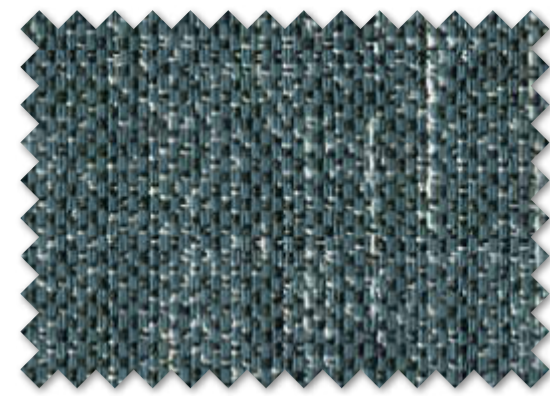


VINAROS 10



TORRENT 10





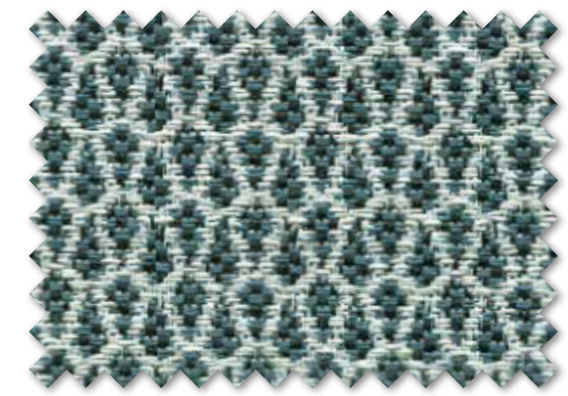
TORRENT 11



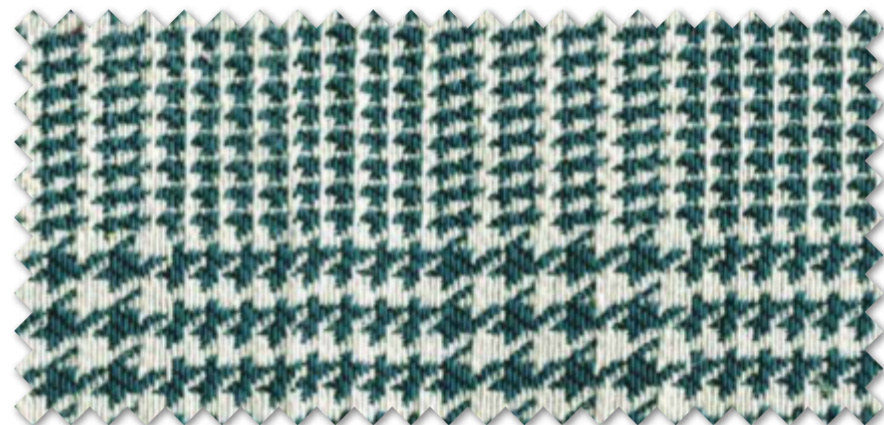
MIRASOL 11



VINAROS 11



FONTETA 11



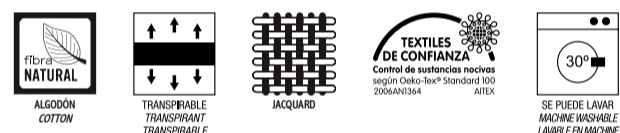
TORRENT 11



BESORA 11



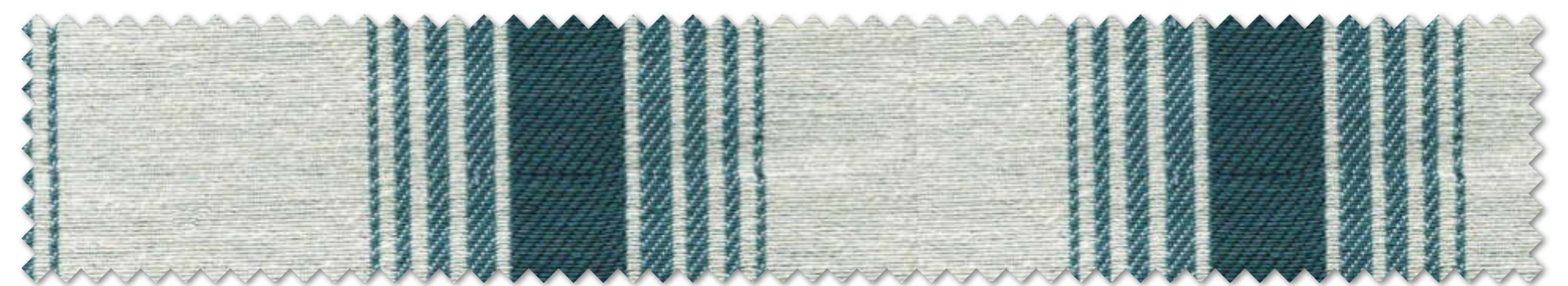
HABANA 26



Combine different designs from the same colour range to create an interesting atmosphere.

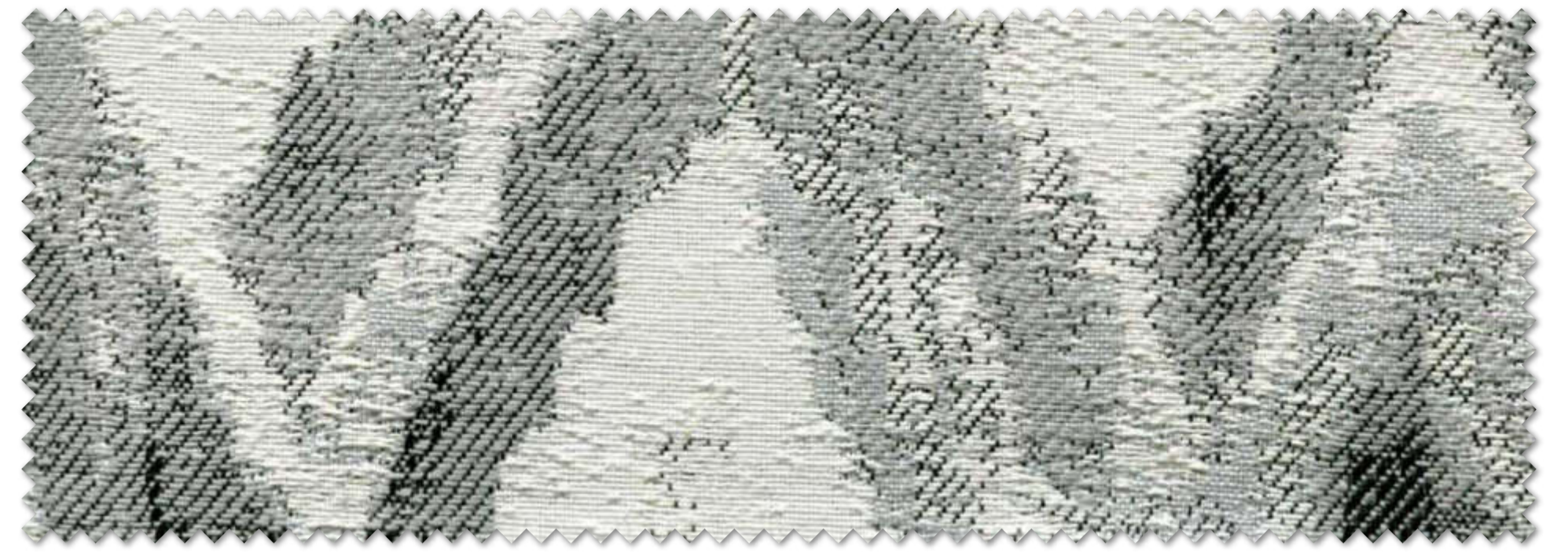


TORTOSA 11



BLANES 11





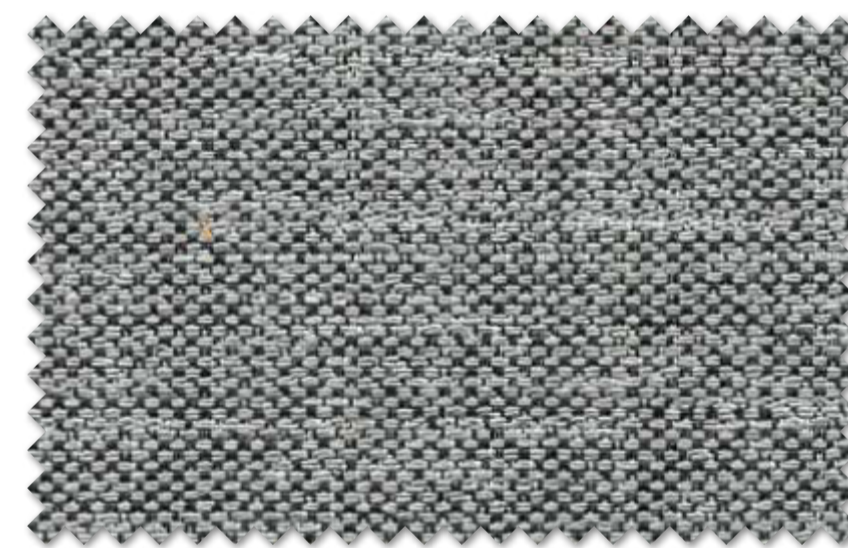
TORTOSA 13



BLANES 13



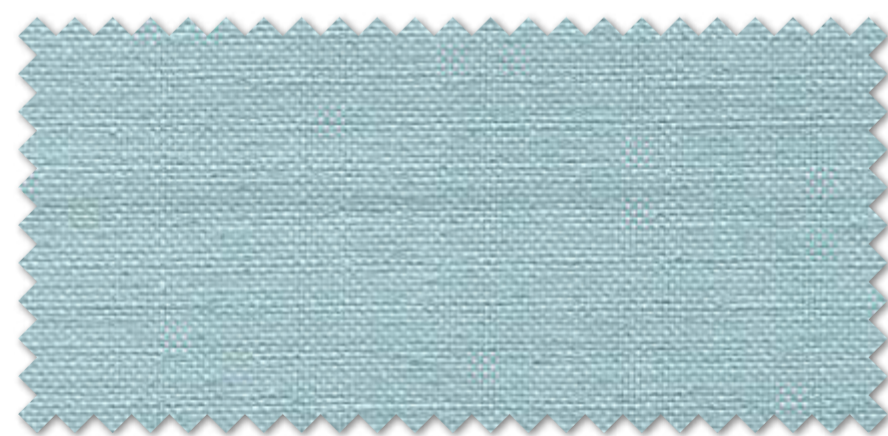
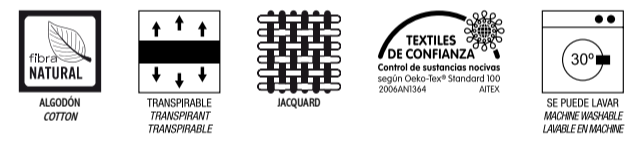
BESORA 13



TORRENT 13



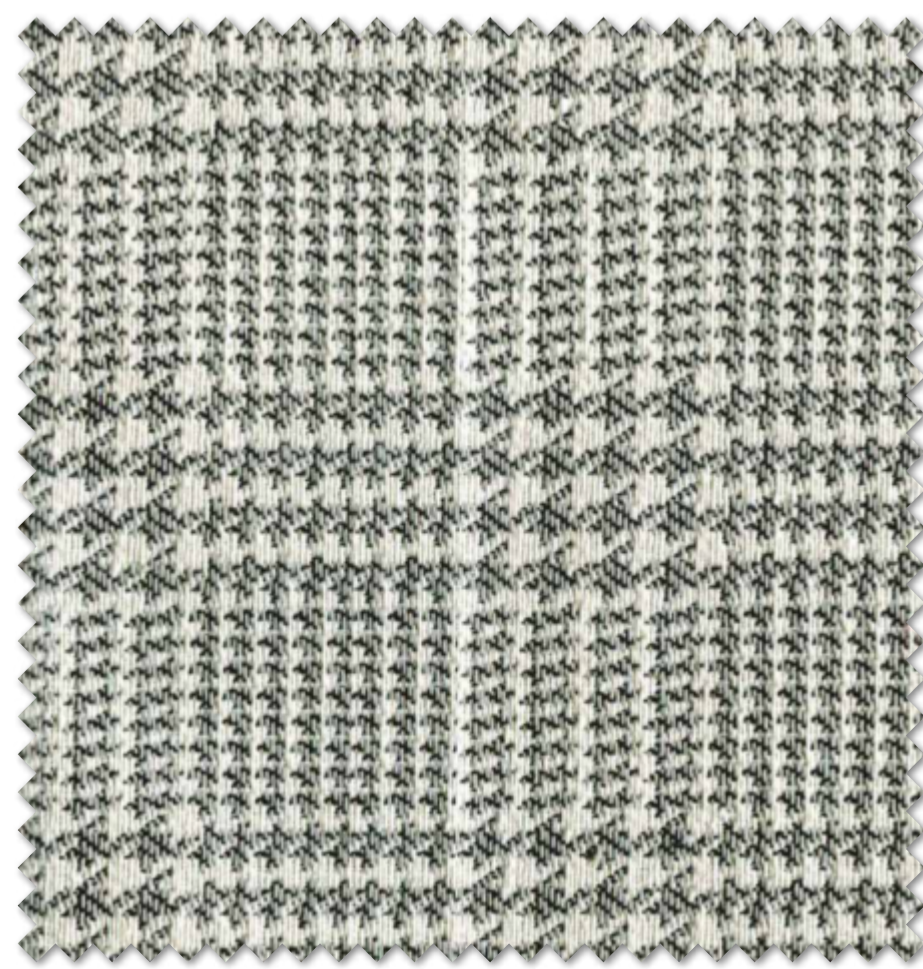
HABANA 06



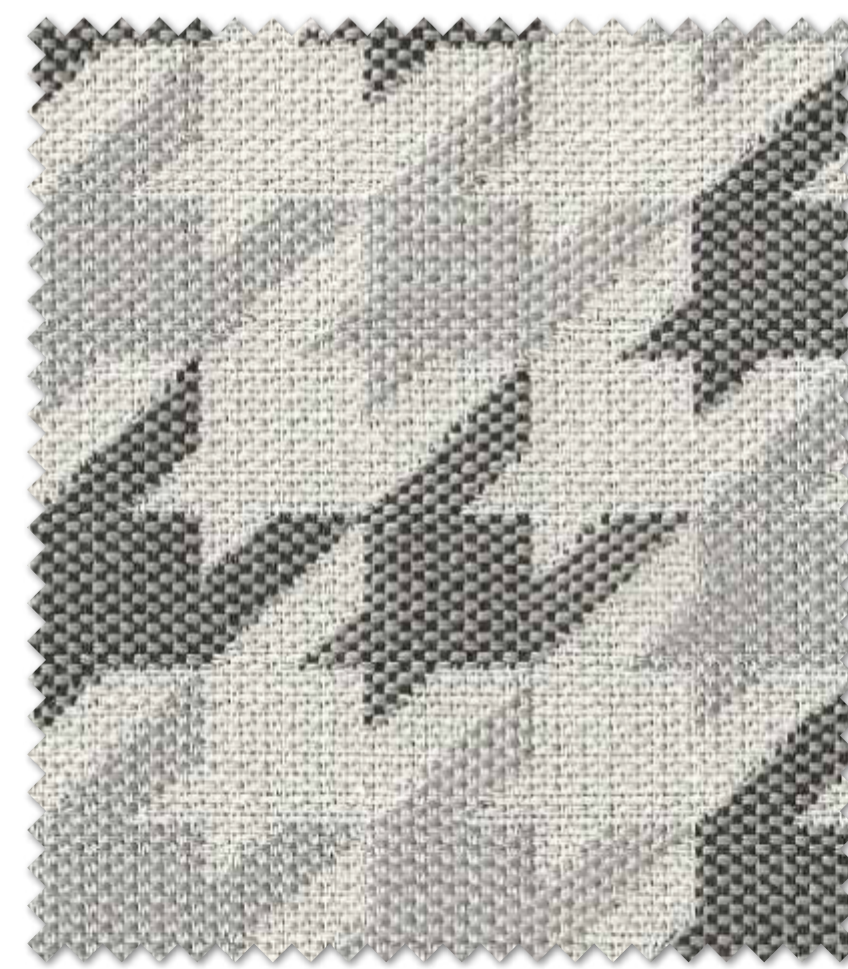
VINAROS 06



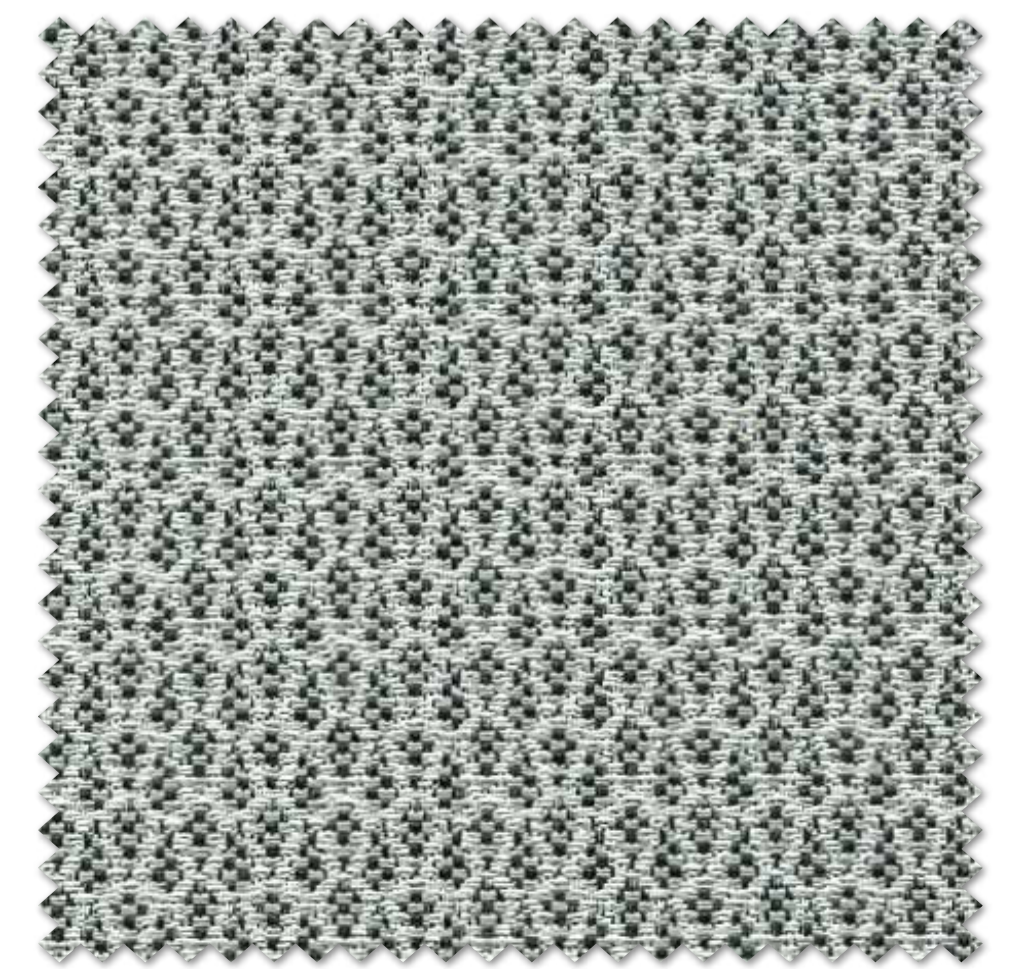
VINAROS 13



OLOT 13



MIRASOL 13

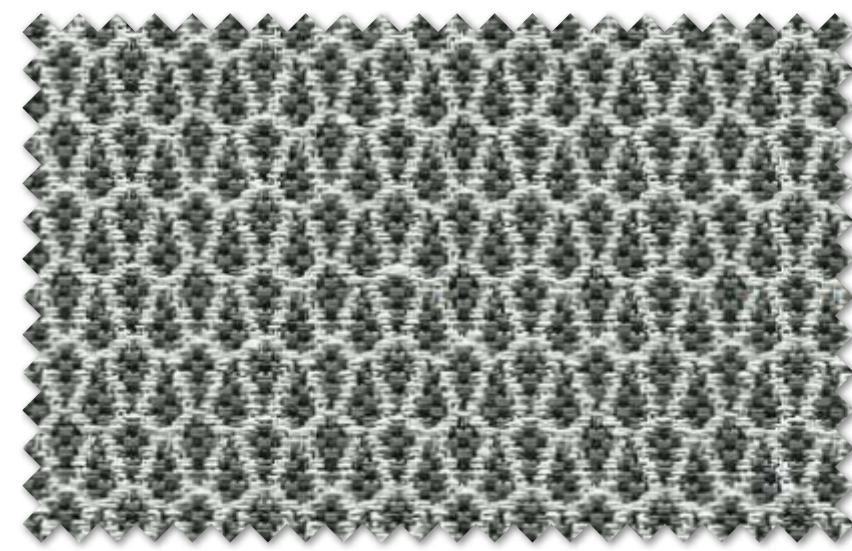


FONTETA 13





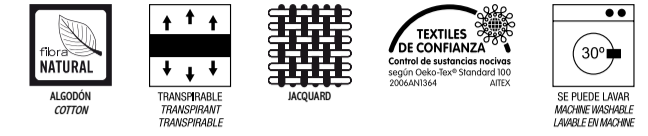
Grey is always elegant.



FONTETA 12



BESORA 12



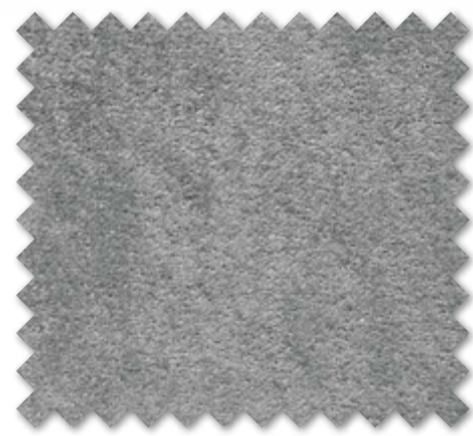
OLOT 12



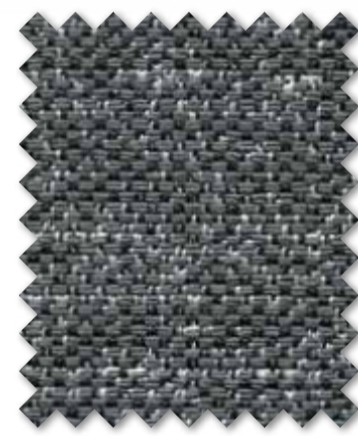
MIRASOL 12



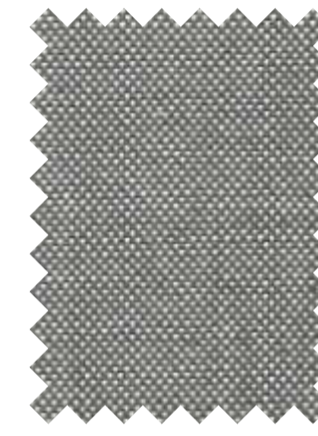
VINAROS 05



HABANA 03



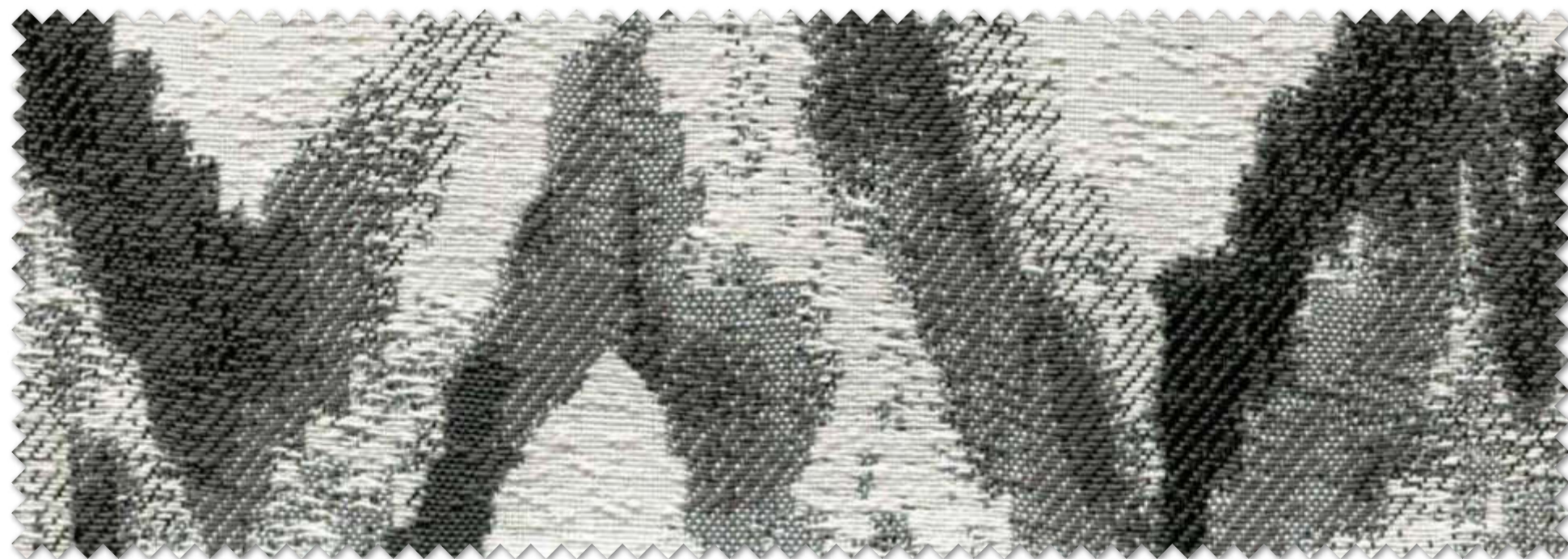
TORRENT 12



VINAROS 12



HABANA 21



TORTOSA 12



Neutral colour: perfect for all home styles.



BLANES 12



# especificaciones técnicas.

## technical specifications · spécifications techniques

### mirasol · blanes · tortosa olot · besora · fonteta · torrent

COMPOSICIÓN Composition / Composition	75% Algodón Cotton Cotton 25% Poliéster Polyester Polyester	
ANCHO Width / Largeur	140 cm · 54 in.	
PESO Weight / Poids	430 gr/m2 · 600 gr/ml	
RESISTENCIA DE LAS COSTURAS Seam strenght / Résistance des coutures	Urdimbre Warp Châine 3.2 mm Trama Weft Trame 2.8 mm	BS 3320:1988 / BS 2543:1995
RESISTENCIA A LA ABRASIÓN Abrasion resistance / Résistance à l'abrasion	> 24.000 Ciclos Cycles Cycles	BS 5690 / BS 2543:1995
SOLIDEZ DE LOS COLORES A LA LUZ Colour fastness to light / Résistance à la lumière	5	UNE 40187 / BS 1006-B02
SOLIDEZ A LA LIMPIEZA EN SECO Rubbing solvents / Résistance au nettoyage à sec	4 / 5	ISO 105-D01 / UNE 40099
SOLIDEZ DE LOS COLORES AL LAVADO Rubbing fastness in humid state / Résistance au nettoyage	4 / 5	ISO 105-C06 / UNE 40029
RESISTENCIA AL PILLING Pilling resistance / Résistance au pilling	4	ISO / DIS 12945-2
INSTRUCCIONES DE LAVADO Washing instructions / instructions de lavage		

### vinarós



COMPOSICIÓN Composition / Composition	80% Algodón Cotton Cotton 20% Poliéster Polyester Polyester	
ANCHO Width / Largeur	140 cm · 54 in.	
PESO Weight / Poids	400 gr/m2 · 560 gr/ml	
RESISTENCIA DE LAS COSTURAS Seam strenght / Résistance des coutures	Urdimbre Warp Châine 1.2 mm Trama Weft Trame 1.2 mm	BS 3320:1988 / ISO 13936-2
RESISTENCIA A LA ABRASIÓN Abrasion resistance / Résistance à l'abrasion	> 26.000 Ciclos Cycles Cycles	BS 5690 / BS 2543:1995
SOLIDEZ DE LOS COLORES A LA LUZ Colour fastness to light / Résistance à la lumière	5	UNE 40187 / BS 1006-B02
SOLIDEZ A LA LIMPIEZA EN SECO Rubbing solvents / Résistance au nettoyage à sec	4 / 5	ISO 105-D01 / UNE 40099
SOLIDEZ DE LOS COLORES AL LAVADO Rubbing fastness in humid state / Résistance au nettoyage	4 / 5	ISO 105-C06 / UNE 40029
RESISTENCIA AL PILLING Pilling resistance / Résistance au pilling	4 / 5	ISO / DIS 12945-2
INSTRUCCIONES DE LAVADO Washing instructions / instructions de lavage		

### habana



COMPOSICIÓN Composition / Composition	100% Poliéster Polyester Polyester	
ANCHO Width / Largeur	140 cm · 54 in.	
PESO Weight / Poids	320 gr/m2 · 448 gr/ml	
RESISTENCIA AL RASGADO Tear strenght / Résistance à la déchirure	Urdimbre Warp Châine 64 N Trama Weft Trame 40 N	ISO 13937 - 3 : 2000
RESISTENCIA A LA ABRASIÓN Abrasion resistance / Résistance à l'abrasion	> 30.000 Ciclos Cycles Cycles	ISO 12947 - 2 : 1998
SOLIDEZ DE LOS COLORES A LA LUZ Colour fastness to light / Résistance à la lumière	4	ISO 105 B02 : 1994
SOLIDEZ A LA LIMPIEZA EN SECO Rubbing solvents / Résistance au nettoyage à sec	4	ISO 105 X12 : 2001
SOLIDEZ DE LOS COLORES AL LAVADO Rubbing fastness in humid state / Résistance au nettoyage	4	ISO 105 X12 : 200
RESISTENCIA AL PILLING Pilling resistance / Résistance au pilling	4 / 5	ISO 12945-2 X12 : 200
INSTRUCCIONES DE LAVADO Washing instructions / instructions de lavage		

## cuidado de los tejidos.

instrucciones de lavado / washing instructions / instructions de lavage



Lavado a máquina, máximo a 30° C con detergentes neutros.  
Hand wash, maximum 30° C with neutral detergents.  
Lavage à la main, un maximum de 30° C avec un détergent neutre.



Planchar por la cara posterior, máxima 110°.  
Iron only on the rear side, at a maximum of 110°.  
Repasser par la face de derrière, 110° au maximum.



No arrugar, retorcer ni centrifugar.  
Do not squeeze, wrink or spin-dry.  
Ne pas presser ou essorer.



No usar lejía.  
Do not use bleach.  
Ne pas utiliser eau de javel.



Lavar a mano.  
Hand Wash.  
Laver à la main.



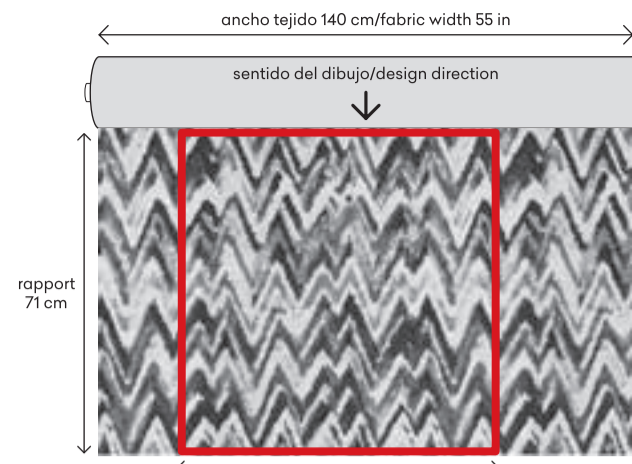
Puede utilizarse el lavado en seco.  
Dry cleaning can also be used.  
Nettoyage à sec peut être utilisé.



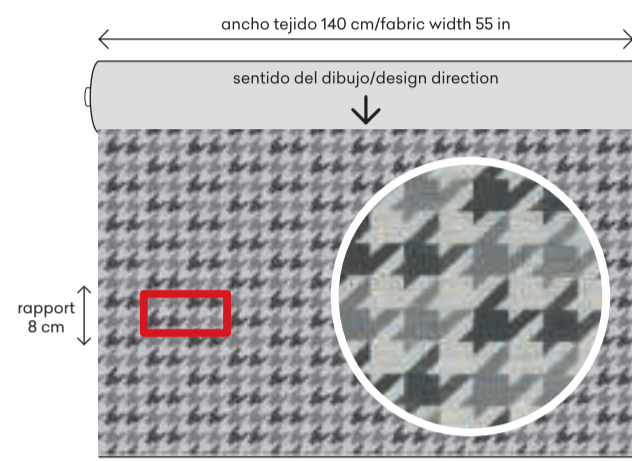
Evitar secar al sol.  
Avoid drying in the sun.  
Éviter sécher au soleil.



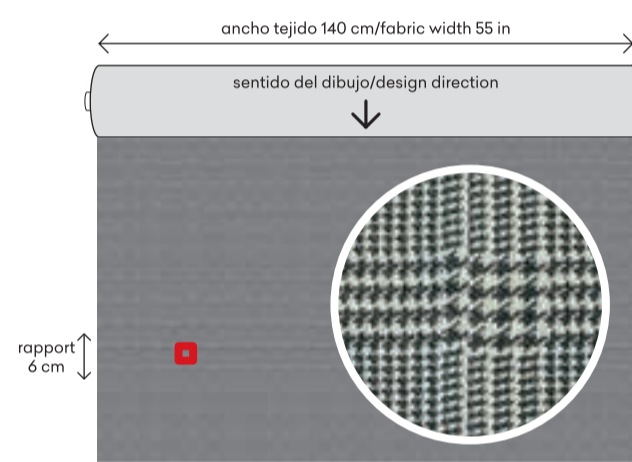
No secar en secadora.  
Do not tumble dry.  
Ne pas sécher en machine.



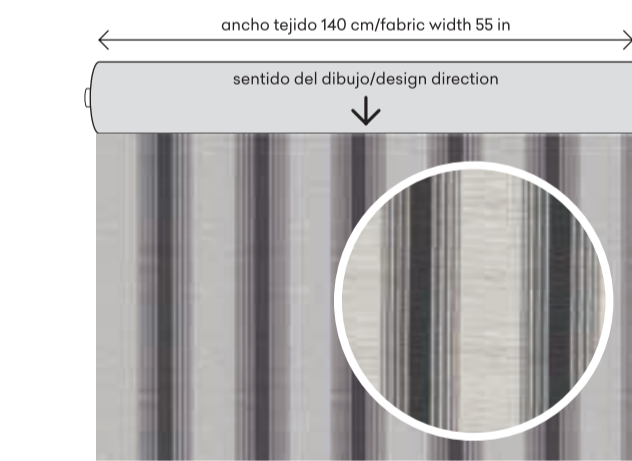
tortosa.



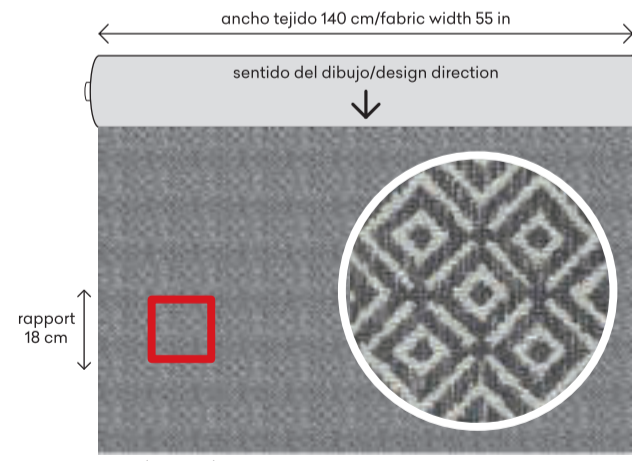
mirasol.



olot.



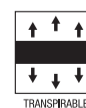
blanes.



besora.



ALGODÓN COTTON



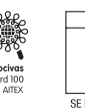
TRANSPRABLE TRANSPARENT TRANSPARENT



JACQUARD



TEXTILES DE CONFIANZA Control de sustancias nocivas según Oeko-Tex® Standard 100 2006/AN1564 ATEX



SE PUEDE LAVAR MACHINE WASHABLE LAVABLE EN MACHINE



www.froca.com



froca **perfect** fabrics



[www.froca.com](http://www.froca.com)